



12 Hillberry Meadows, Governors Hill, Douglas, Isle of Man, IM2 7BJ
Asking Price £365,000



- Bright, spacious living room
- Stylish kitchen with separate utility room
- Lovely conservatory overlooking the private garden
- Two generous double bedrooms
- Beautifully landscaped rear garden – a real suntrap!
- Detached single garage & off-road parking



12 Hilberry Meadows, Governors Hill, Douglas, Isle of Man, IM2 7BJ

Welcome to 12 Hilberry Meadows – a beautifully maintained 2-bedroom detached bungalow located in one of the Isle of Man's most desirable residential developments. Nestled on a quiet cul-de-sac in the heart of Hilberry Meadows, this charming home is ideal for downsizers, professional couples, or anyone seeking low-maintenance living in a peaceful yet convenient location.

The property is set back with a neat front lawn and driveway providing access to a detached single garage, offering ample off-road parking and additional storage. Inside, the home has been thoughtfully laid out to maximise both comfort and practicality.

The bright and spacious living room is the central hub of the home, with large windows that flood the space with natural light. This flows seamlessly into a well-appointed kitchen, with ample worktop and cupboard space, and a separate utility room for added convenience.

The real showstopper of the home is the conservatory, accessed from the living area and overlooking the private, beautifully landscaped rear garden. This sun-filled space is perfect for relaxing, entertaining, or enjoying your morning coffee while taking in the tranquillity of the surroundings.

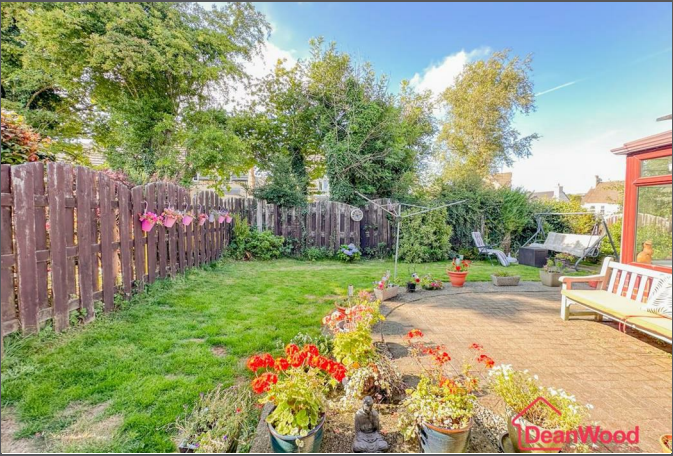
The bungalow offers two generously sized double bedrooms, both with fitted storage and positioned to offer peace and privacy. The main shower room is modern and tastefully finished, complementing the rest of the home's neutral, move-in-ready décor.

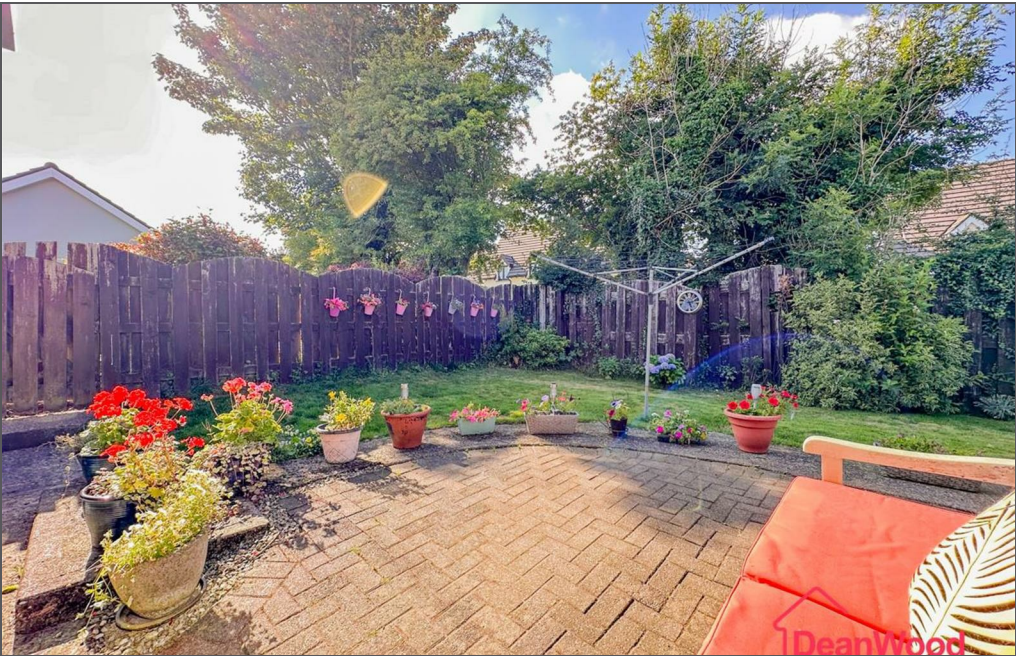
The rear garden has been lovingly landscaped to offer year-round colour and interest, with established borders, patio areas and low-maintenance design – ideal for enjoying the outdoors without the heavy upkeep.

With gas central heating, double glazing throughout, and located just minutes from local amenities, schools, and excellent transport links to Douglas and beyond, 12 Hilberry Meadows represents a rare opportunity to acquire a well-rounded, detached bungalow in a prime setting.



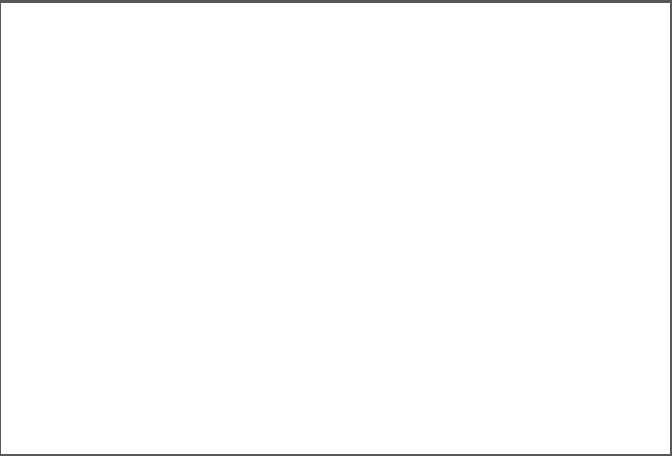
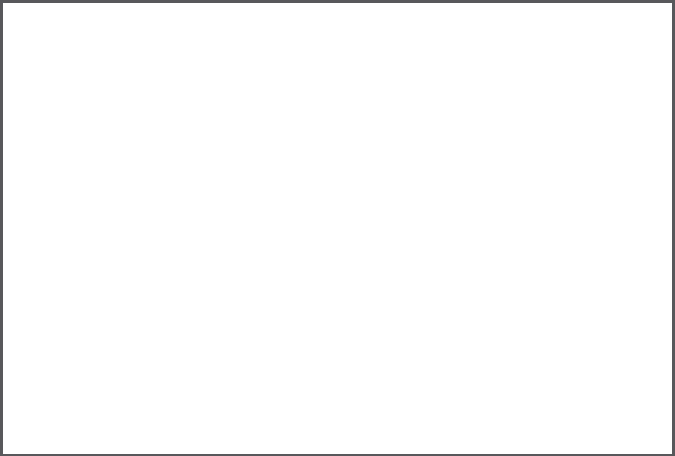




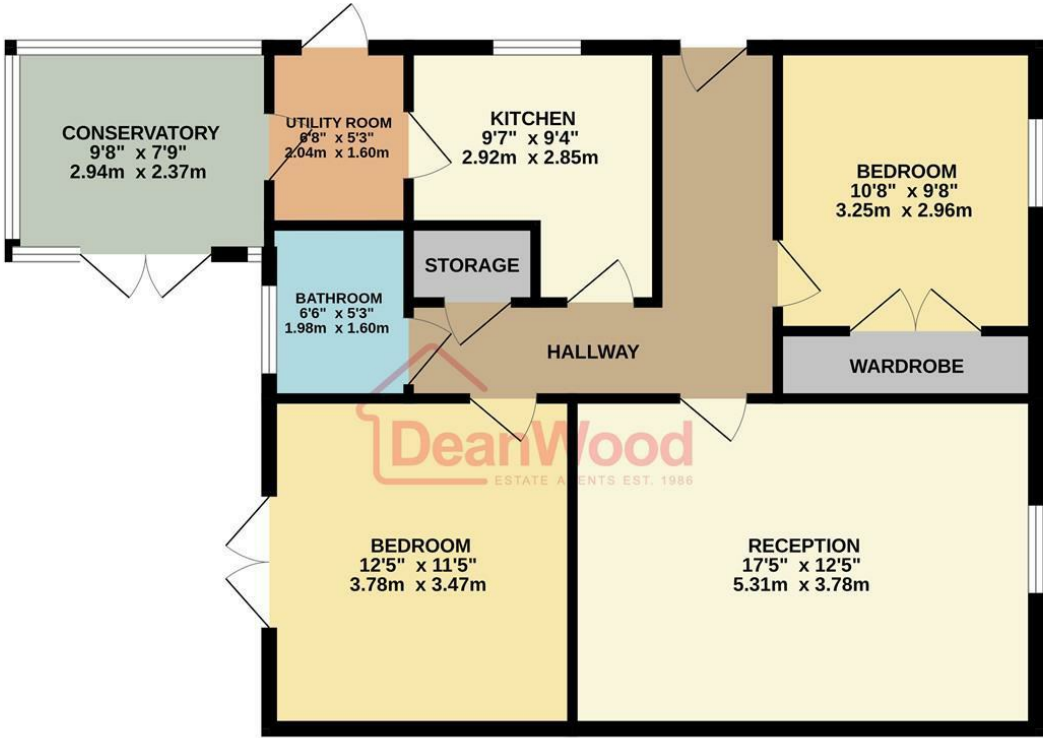


--	--	--





GROUND FLOOR
812 sq.ft. (75.5 sq.m.) approx.



TOTAL FLOOR AREA : 812 sq.ft. (75.5 sq.m.) approx.
Not to scale-for identification purposes only
Made with Metropix ©2025



DOUGLAS
37 VICTORIA STREET
DOUGLAS
ISLE OF MAN IM1 2LF
T 01624 620606
F 01624 677363
E info@deanwood.co.im

CASTLETOWN
COMPTON HOUSE
9 CASTLE STREET CASTLETOWN
ISLE OF MAN IM9 1LF
T 01624 825995
F 01624 825996
E castletown@deanwood.co.im

RAMSEY
LEZAYRE HOUSE
87 PARLIAMENT STREET
RAMSEY ISLE OF MAN IM8 1AQ
T 01624 816111
F 01624 816588
E ramsey@deanwood.co.im

These particulars are for information purposes only. They do not constitute or form any contract nor should any statement contained herein be relied upon as a representation of fact. Neither the vendor nor DeanWood Agencies Limited ('the firm'), nor any officer or employee of the firm accept liability or responsibility for any statement contained herein. The vendor does not by these particulars, nor does the firm, nor does any officer or any employee of the firm have any authority to make or give any representation or warranty whatsoever as regards the property or otherwise. It is the sole responsibility of any person interested in the property described in these particulars to make all proper enquiries and searches to verify the description of the property and all other particulars herein.

FOR MORE PROPERTIES VISIT OUR WEBSITE @ **deanwood.im**